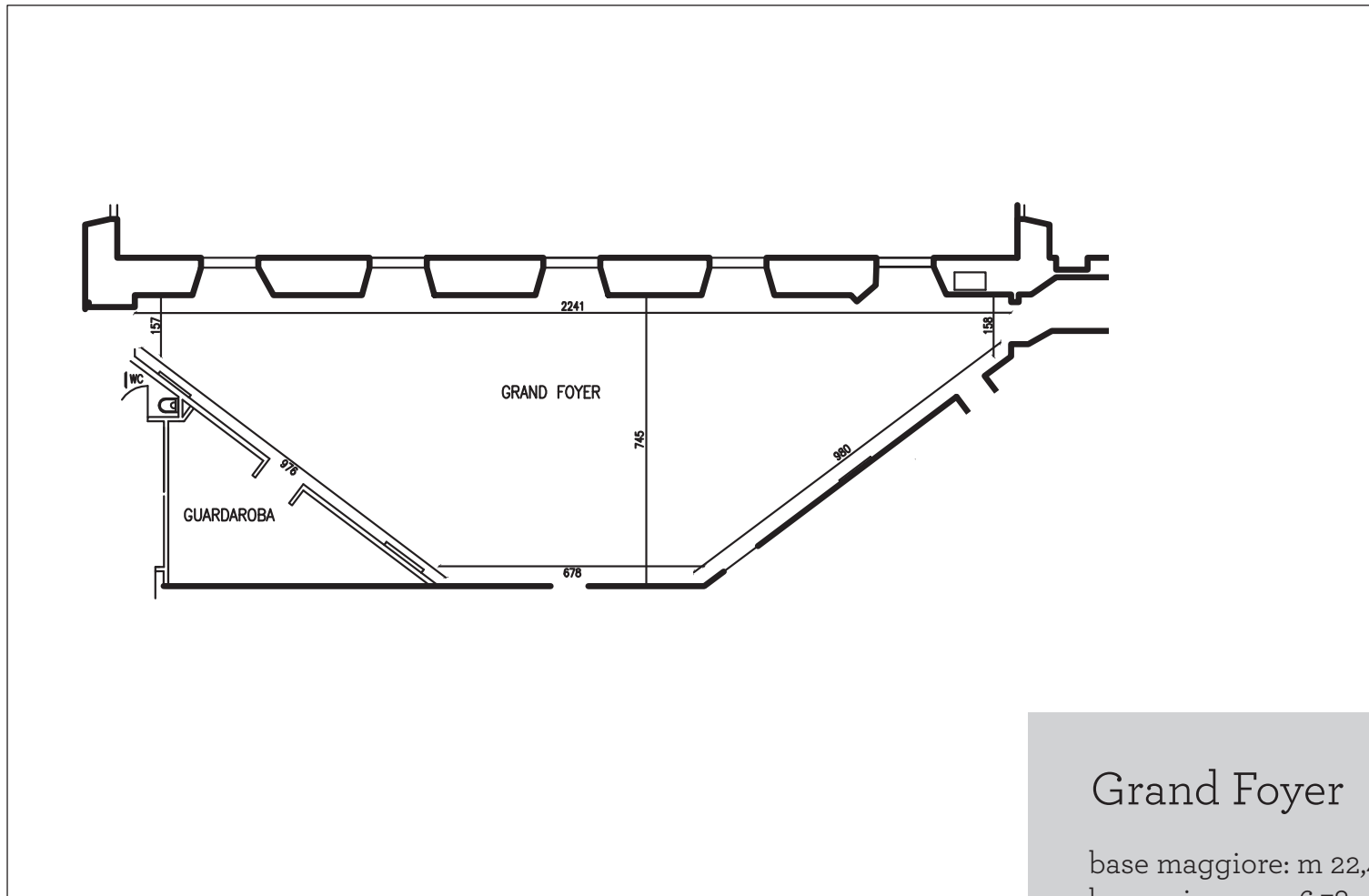
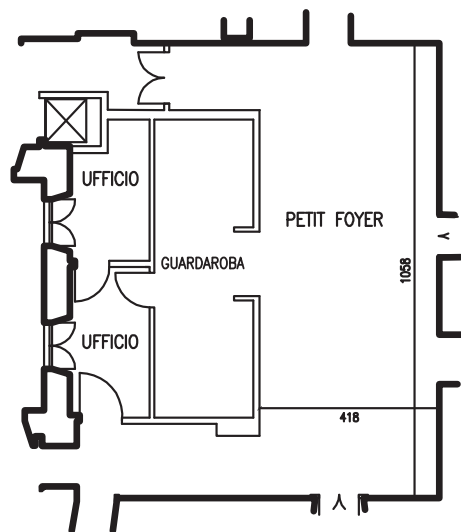


Piano Napoleonico



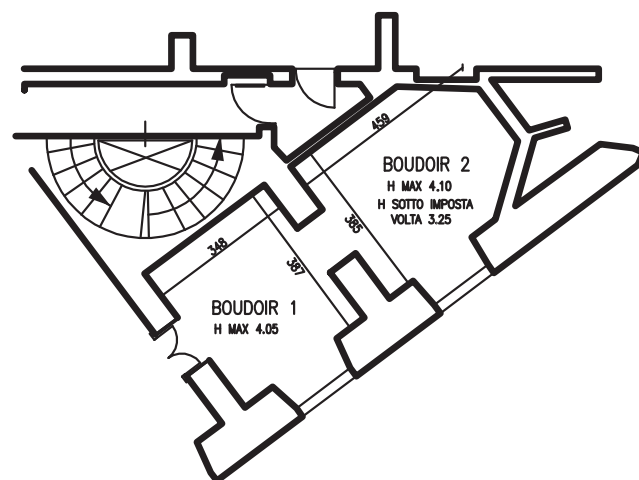
Grand Foyer

base maggiore: m 22,41,
base minore: m 6,78,
distanza tra le due pareti: m 7,45
lati obliqui: m 9,80



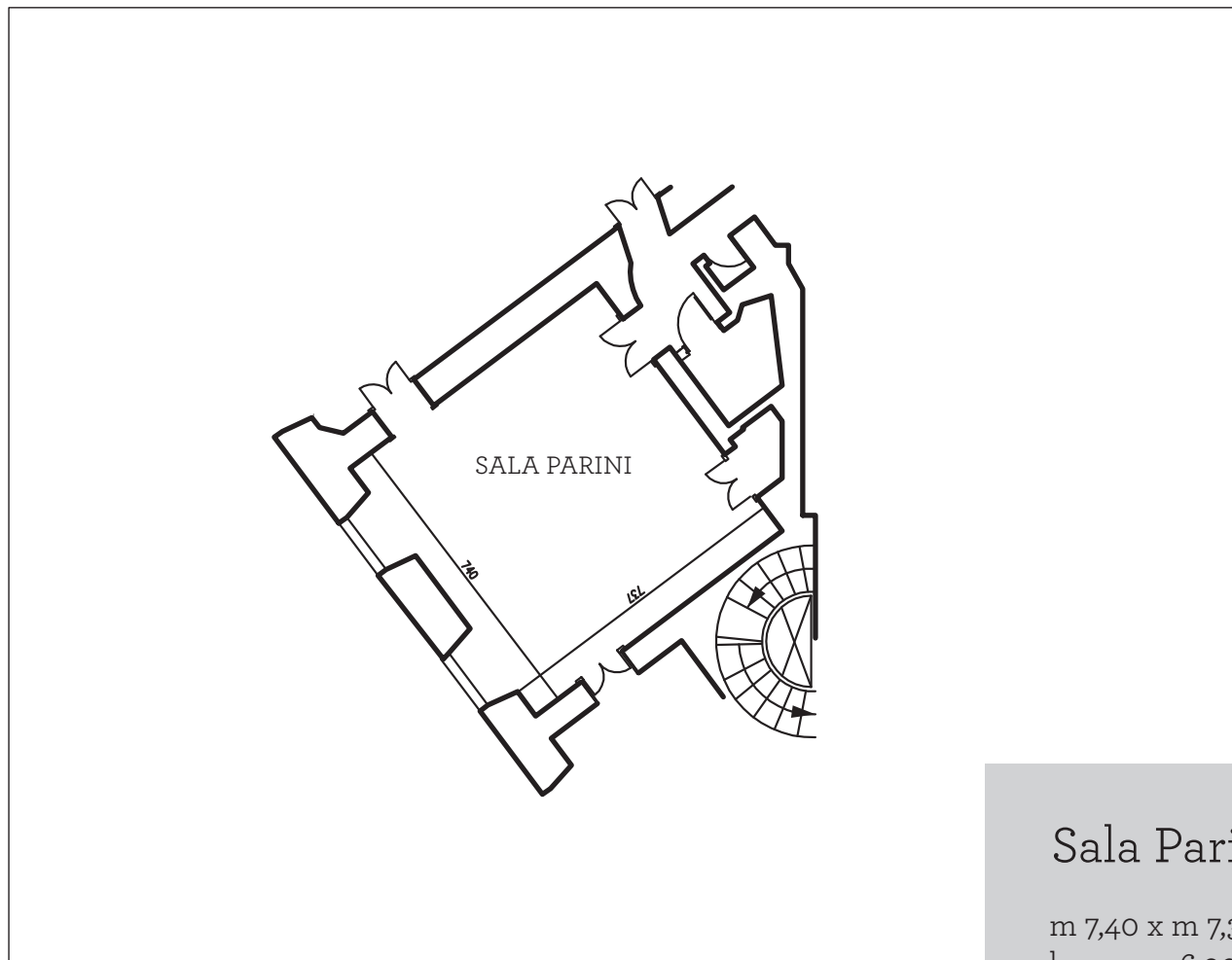
Petit Foyer

m 4,18 x m 10,58



Boudoir

- 1) m 3,87 x m3,48 h max 4,05
- 2) m3,85 x m 4,59 h mx 410

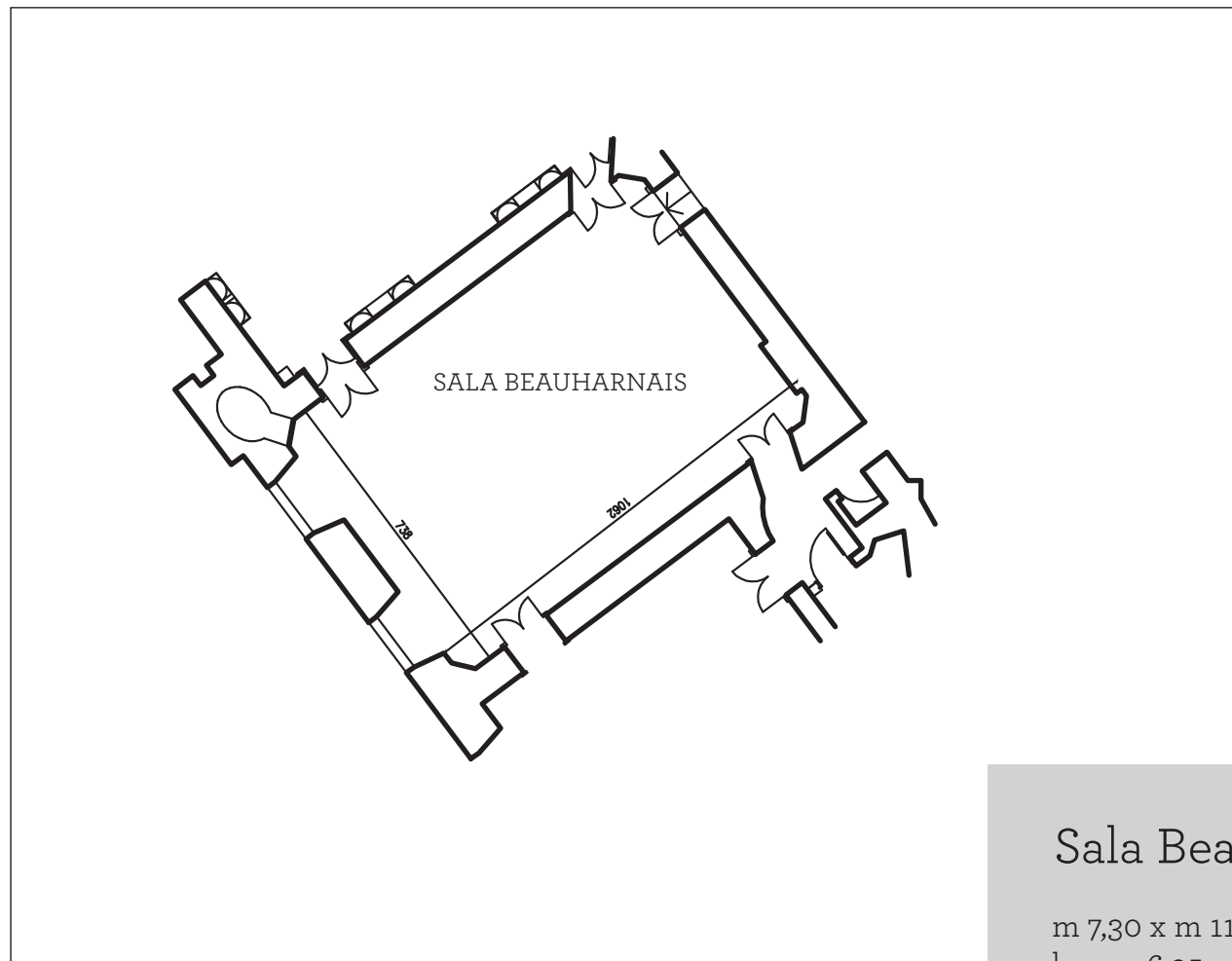


Sala Parini

m 7,40 x m 7,37

h max m 6,90

h sotto imposta volta m 4,75



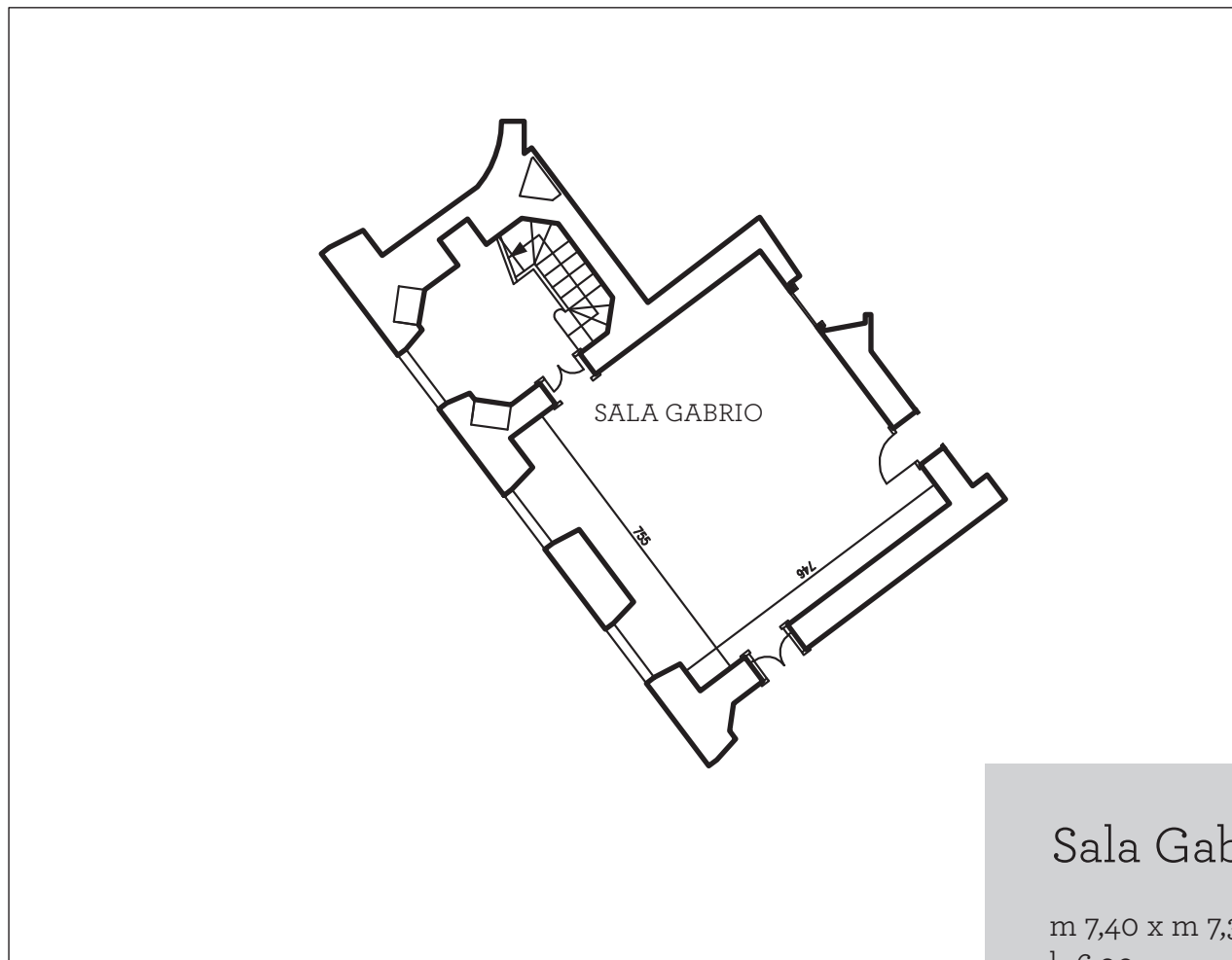
Sala Beauharnais

m 7,30 x m 11,09
h max 6.95



Sala Gian Galeazzo

m 7.30 x m 11.09
h max m 6.95

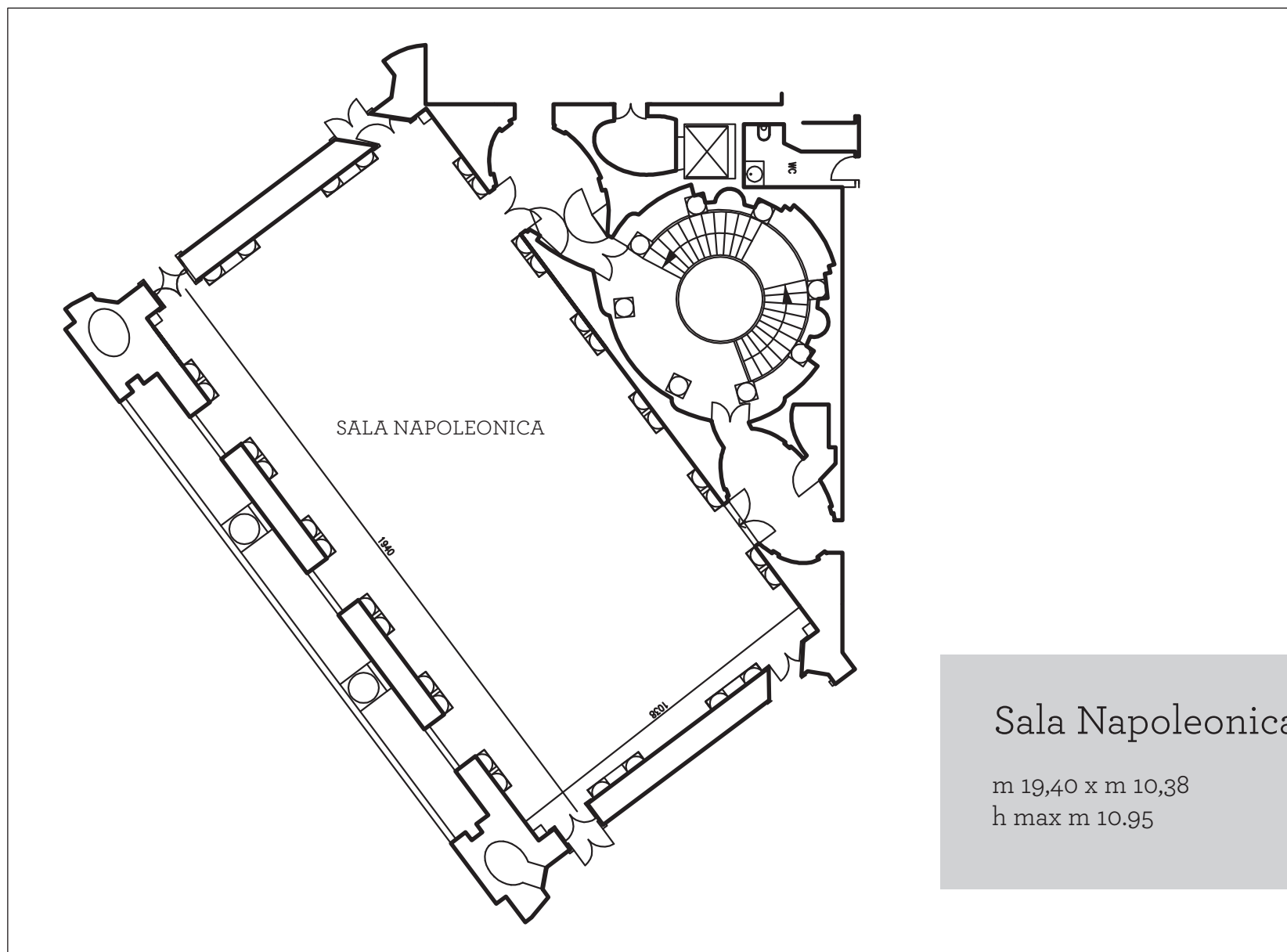


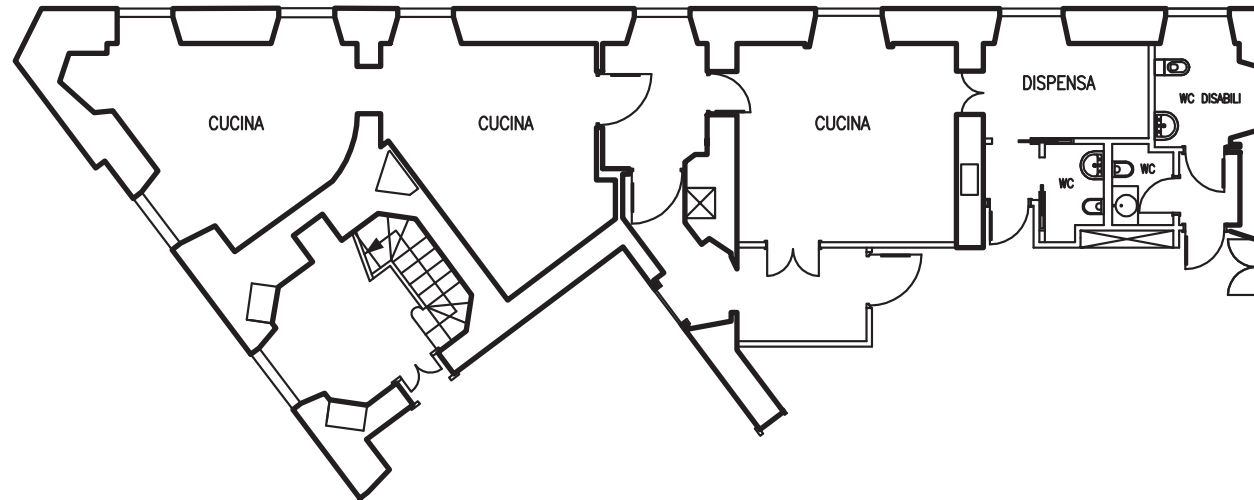
Sala Gabrio

m 7,40 x m 7,37

h 6,90

h sotto imposta volta m 4,75





Cucine